



**HOME AUTOMATION**  
*The heart of a smarter home.*

## Quick Start Guide for basic indoor camera installation.



Before beginning camera installation please ensure the homeowner has a compatible 802.11N router. If the router is not compatible, installation may not be successful.

### STEP 1

Ensure that your device (iPad, laptop or phone) and the Côr panel are both connected to the homeowner's Wi-Fi® network.

### STEP 2

Power-up the camera and connect it via an Ethernet cable to the homeowner's Wi-Fi router, wait 1-2 minutes while the camera powers up.

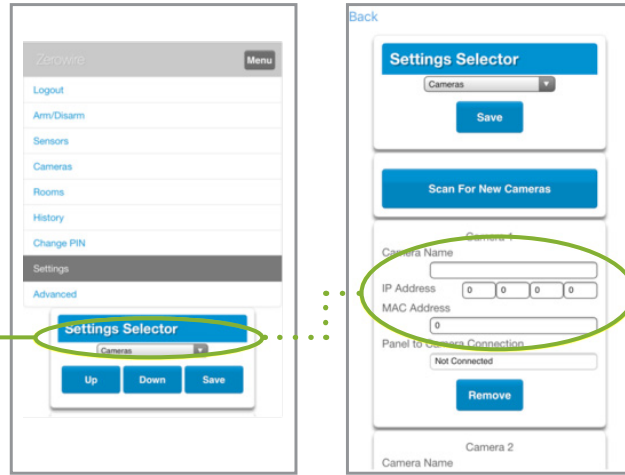
### STEP 3

Obtain the IP address of the Côr panel, use your device browser to login as installer. (Enter the panel IP address in the browser and enter installer credentials.)

1. **MENU** **8**
2. **INSTALLER CODE** **ENTER**
3. **6**
4. **MENU** **MENU**

#### STEP 4

Select *Cameras* from the settings menu. Next, select *Scan for New Cameras*. After the camera IP address appears, name camera and press *Save*. Record the IP address for later use.



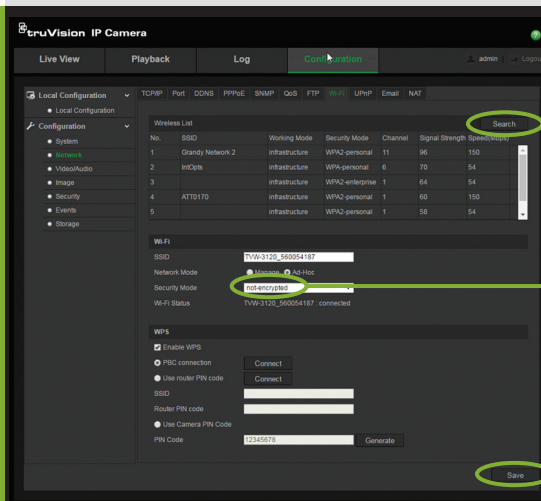
#### STEP 5

Wait 2-3 minutes, have the homeowner open their Smart Home app and verify the camera is connected.

#### STEP 6

Use your device browser and enter the IP address of the camera from step four. Login to TruVision IP camera with user “admin” (case sensitive) and password “1234” credentials.

Once logged in, from the *Configuration* menu on the left, select *Network*.



Next, locate the homeowner’s Wi-Fi network from the list and have the homeowner enter their password in “Key 1”.

Hit *Connect* and then *Save*.

Confirm Wi-Fi status shows “connected”.

#### STEP 7

Disconnect the Ethernet cable and power-down camera. Put the camera in the customer’s desired location (ensuring it is a location where the customer typically has a good Wi-Fi connection), and power-up the camera.

Wait 2-3 minutes, then have the homeowner check their app, the camera should be connected. If not, wait another few minutes, check again than proceed to our camera troubleshooting guide if still not connected.

Côr™ Home Automation Quick Start Guides are not intended to take the place of the installation manual. These are intended for those who have previously attended training and have previously installed a Côr Home Automation System. These are intended as reminder guides only.

Wi-Fi® is a registered trademark of the Wi-Fi Alliance Corporation.

©2017 Côr™ Home Automation 5/2017  
01-COR-004-01